

# Bowen Zhou

Crafting spaces that connect and inspire.

bowenzhodesign.com  
bowen.zhou@yale.edu

## EXPERIENCE

Kia Motor  
2022, 2 months

### Design Innovation Lab Design Intern

Delivered a sustainable mobile green space design based on decentralized city models, aligning with Kia's future innovation strategy. Design publicized in the Kia Design Magazine, showcasing experimental models.

Hyundai Motor  
2021, 6 months

### Future City Lab Designer

Researched urban analytical models and scenario-based plans for human-centered, sustainable energy infrastructures. Developed a bio-inspired smart city service model that was adopted and showcased by Hyundai at the 2022 World Cities Summit.

AlensiaXR  
2023-2024, 1 year

### Mixed Reality UI/UX Design Lead

Led the design of augmented reality(AR) interfaces on the HoloLens and Apple Vision Pro to enhance medical students' understanding of anatomy. Developed interactive, place-based learning that transformed traditional classrooms with spatial dynamics and memorization techniques.

NASA  
2020-2022, 2 years

### RISD AR Team Lead, UI/UX Design Lead

Designed and deployed augmented reality interfaces on the HoloLens to assist astronaut navigation and operations during moonwalks. Led a cross-disciplinary team of 20 designers and engineers, facilitated collaborative design sprints and training to develop functional, human-centered AR solutions.

## EDUCATION

Yale University  
2024-2027

Masters of Architecture I  
Architectural Scholarship

Rhode Island School of  
Design  
2017-2022

Double Major Industrial Design and Sculpture  
Sculpture Department Representative  
Honors

## SKILLS

Rhino, Solidworks, Adobe Creative Suite  
User Interface and User Experience Design, XR, Figma  
Animation and Video, Premiere, After Effects  
Rapid Prototyping, Metal and wood fabrication

# Bowen Zhou

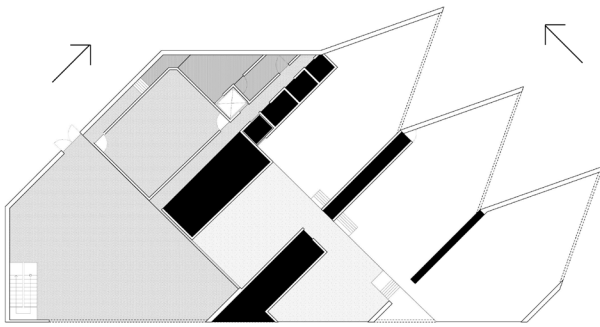
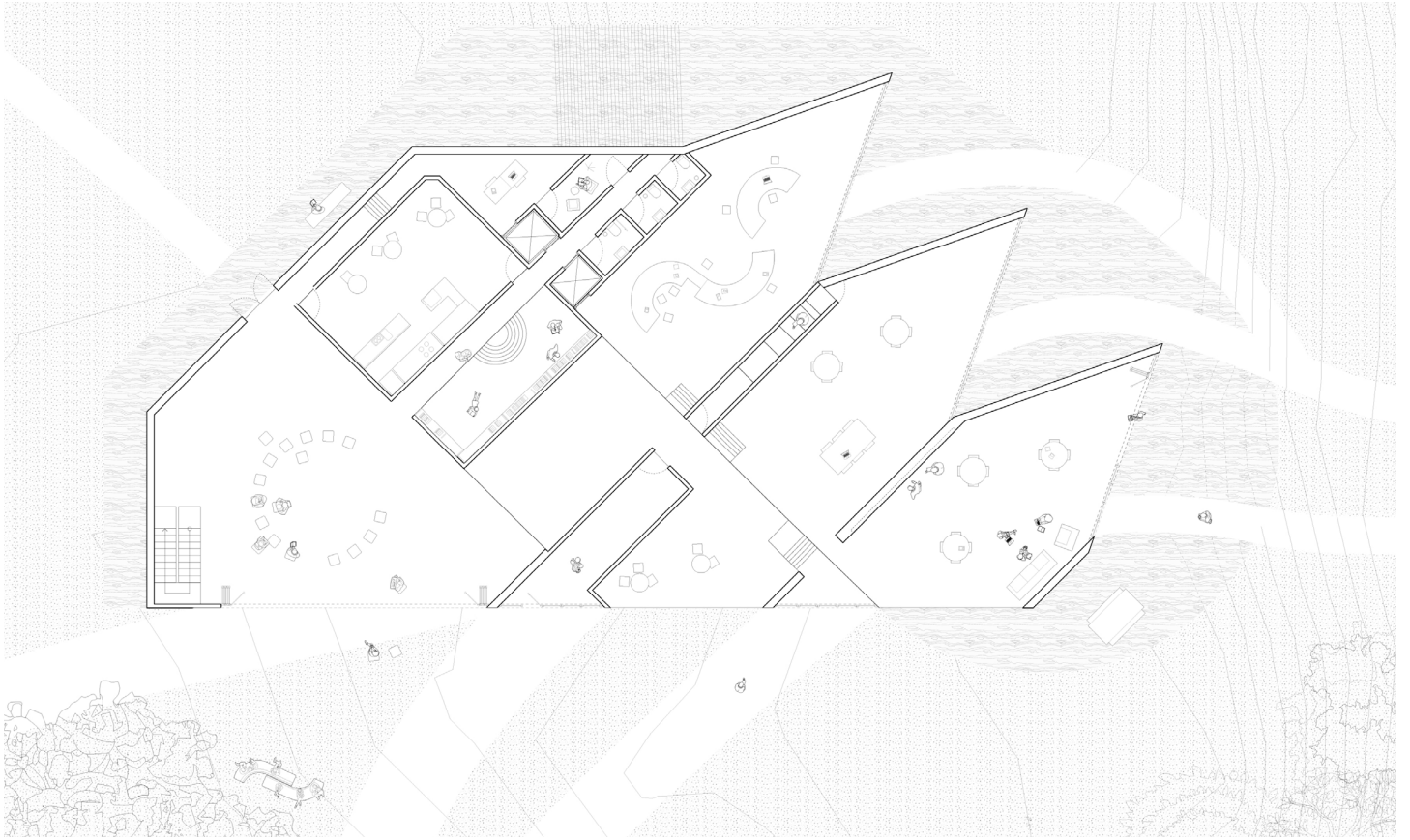


bowenzhodesign.com  
bowen.zhou@yale.edu  
401-837-3437

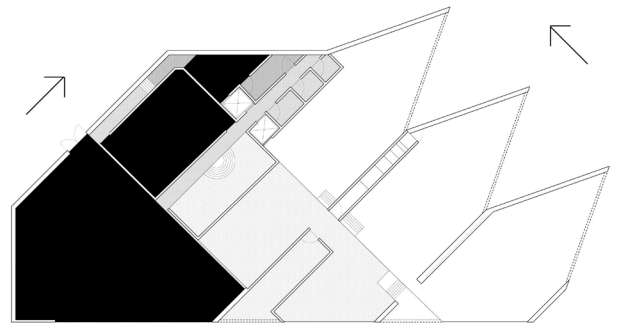
## "Self Portrait"

Home as a shifting landscape—experienced by children who studied abroad, lived in others' homes, and moved between them. A multiplicity of memories, merging, intersecting, and diverging. Space heightens and stretches—memories of home growing distant and distorted.

# Bowen Zhou



Walls Thickening

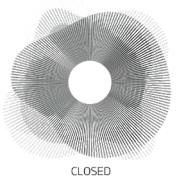


Volume Thickening

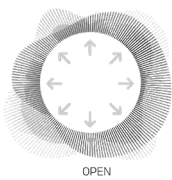
bowenzhouldesign.com  
bowen.zhou@yale.edu  
401-837-3437

Walls thickening—an alien in a country, a stranger at home. Both open to the world and never fully belonging, a traveler between spaces, at times an observer within walls.

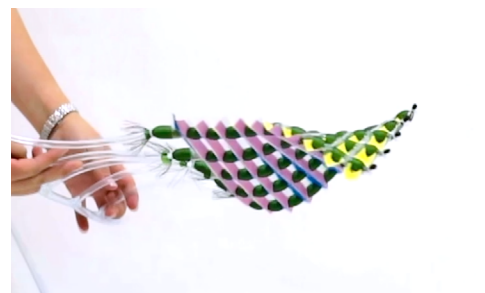
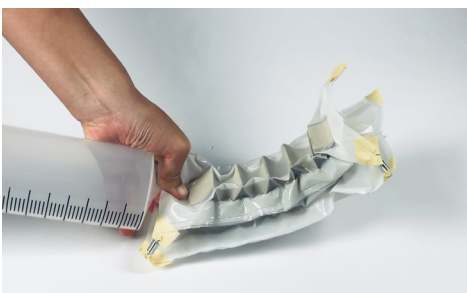
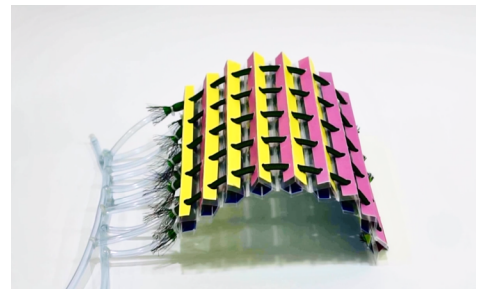
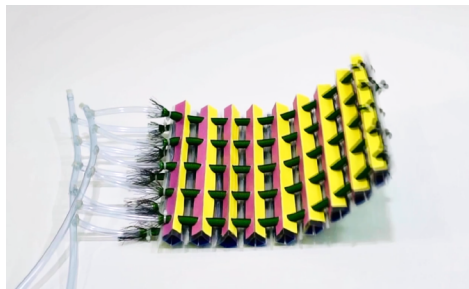
# Bowen Zhou



CLOSED



OPEN

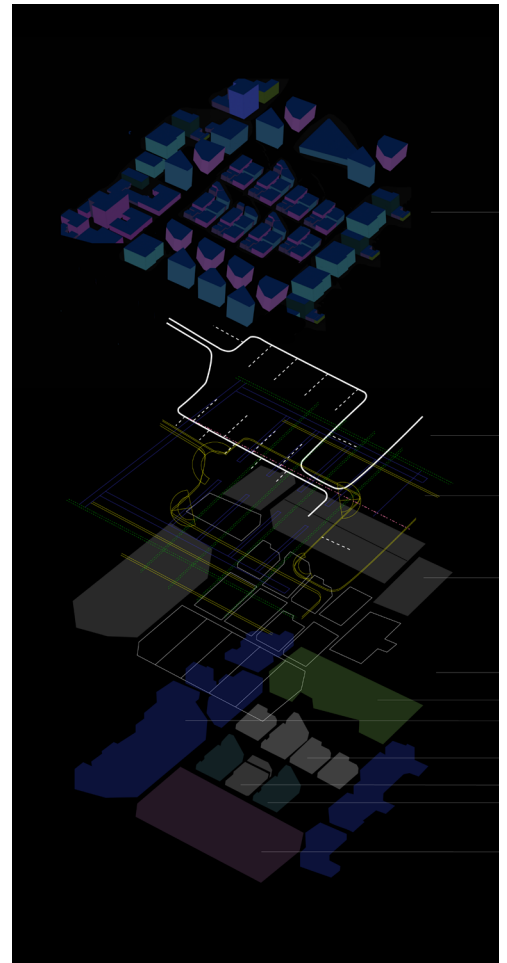


bowenzhouldesign.com  
bowen.zhou@yale.edu  
401-837-3437

## "Growing Car"

Pocket parks emerging from slow-moving, flexible hubs that foster interaction, activation, and play. A hydraulic fabric infused with algae forms the hubs' responsive skin, adapting to circulation and touch.

# Bowen Zhou



bowenzhodesign.com  
bowen.zhou@yale.edu  
401-837-3437

## "Mobile Service City"

A decentralized city modeled on bacterial colonies, where chemical signaling and nutrient distribution inform urban systems. Flexible, autonomous service hubs move across community clusters to distribute resources.